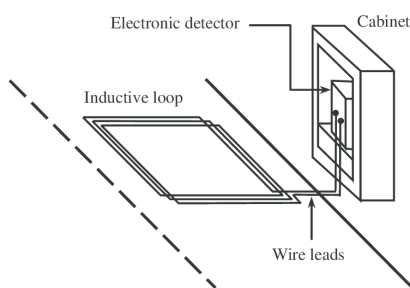


TRAFFIC MONITORING

VEHICLE CLASS AND COUNT

The measurement and classification is integral part of a more complex and complete Traffic Monitoring System. It consist of: terminals, installed along the carriageway for data collection, and a web interface for remote management of them. We choose to use inductive loops for data collection, but the system also support other sensors.



TECHNICAL SPECIFICATION

- **DIMENSION:** Rack 19" – 3U (Height: 132 mm, Length: 320 mm, Length: 365)
- **OPERATING TEMPERATURE RANGE:** -10°C – 50°C
- **WEIGHT:** 2,5 Kg.
- **VEHICLE RECOGNITION:** Up to 10 classes

VEHICLE CLASSIFIER

Inductive loops are the most widely used data collection sensors. Each of our terminals supports up to 16 loops (8 lanes monitored)

KEY BENEFITS

- Vehicle data captur accuracy
- Reduced installation and lifetime costs
- Rugged and reliable device
- Measurement not affected by weather phenomena

KEY FEATURES

- Latest generation inductive loop - based count / classifier
- User - friendly configuration and management application
- Real-time and historical information
- GSM and GPMS communication options for remote data collection
- Low power consumption



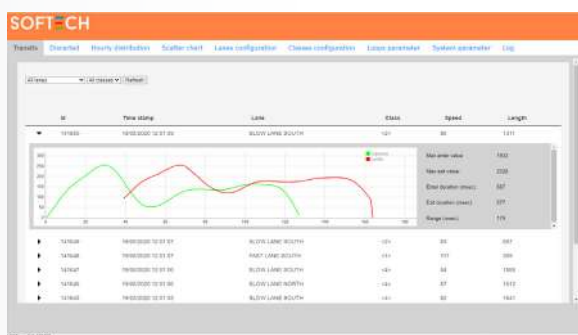
VEGA

CONNECT WITH US
WWW.SOFTECHWEB.IT



WEB INTERFACE

User-friendly and customizable web interface for remote management of data collected from terminals



FEATURES

- Transit's details
- Ground waveforms detected by the loops
- Hourly distribution
- Data analysis based on vehicle class and/or direction of travel
- Scatter chart analysis
- Classes and lanes configuration
- Loops parameters' management
- Log

